

REP-REP-RAF1561-6111X01 Installing repair cable for reversing
camera, VIN: XXXXXXXX

ISTA system version	3.55.11.16402	Data version	R3.55	Programming - data
VIN	XXXXXXX	Vehicle	X'/F15/off-road vehicle/X5 xDrive40e/N20/AUTO/ECE/LL/2016/04	
Int.lev.works	-	Int.lev. (cur.)	-	Int.lev.(tar.) -
Mileage	0 km			

61 11 ...

Installing repair cable
for reversing camera

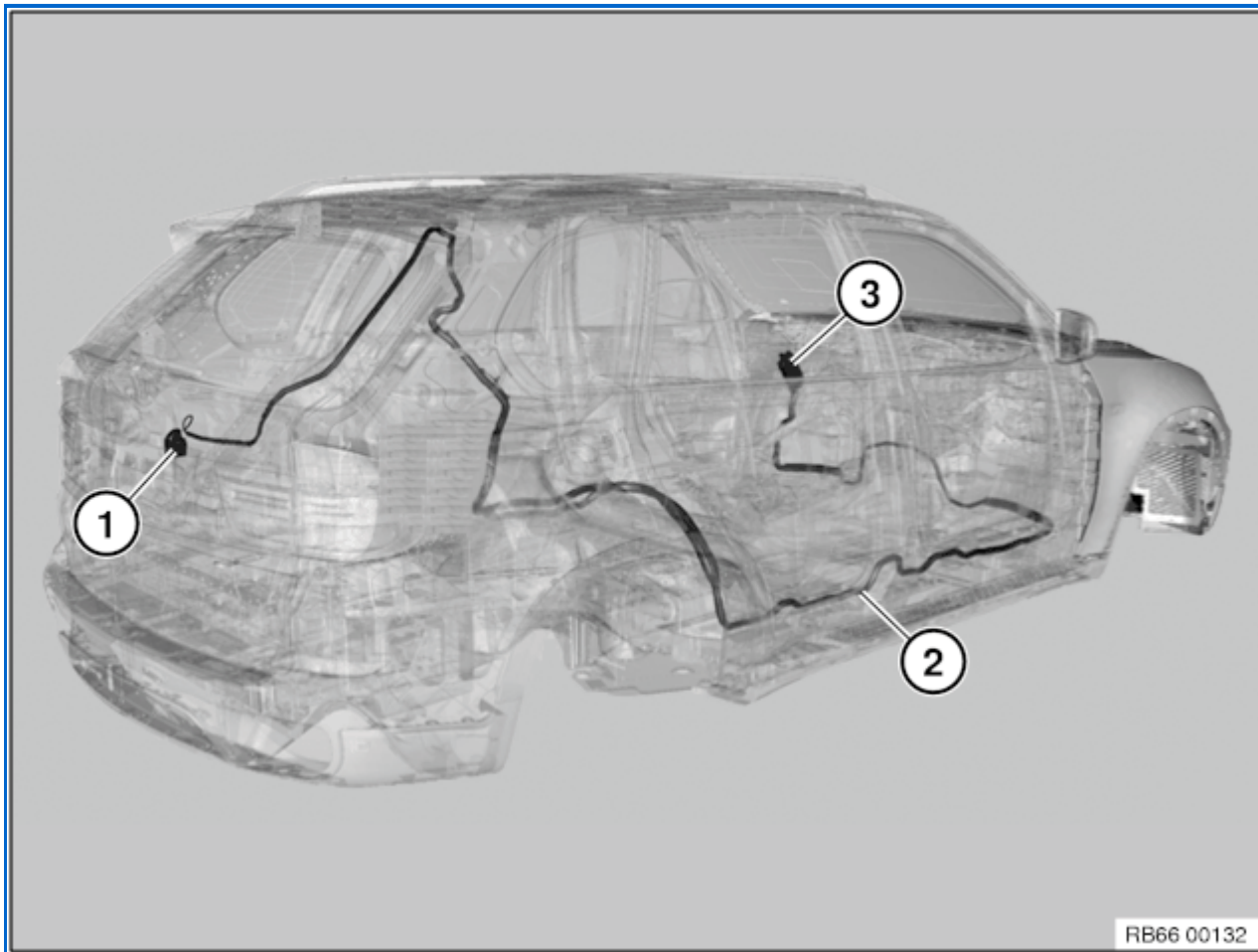


Read and comply with notes on [handling wiring harnesses and cables](#).



Necessary preliminary tasks:

- [Remove tailgate trim panel](#)
- [Remove panel for roof pillar at rear \(D-pillar\)](#)
- Remove right luggage compartment trim panel
- Loosen power distribution box, rear
- [Remove right door sill cover strip](#)
- Lift carpet on the right
- [Remove headunit](#)
- Disconnect battery earth lead



Route repair cable from the rear view camera (1) along the wiring harness (2) to the headunit and attach appropriately.

The repair wiring harness of the rear view camera splits around the rear, left wheel arch.

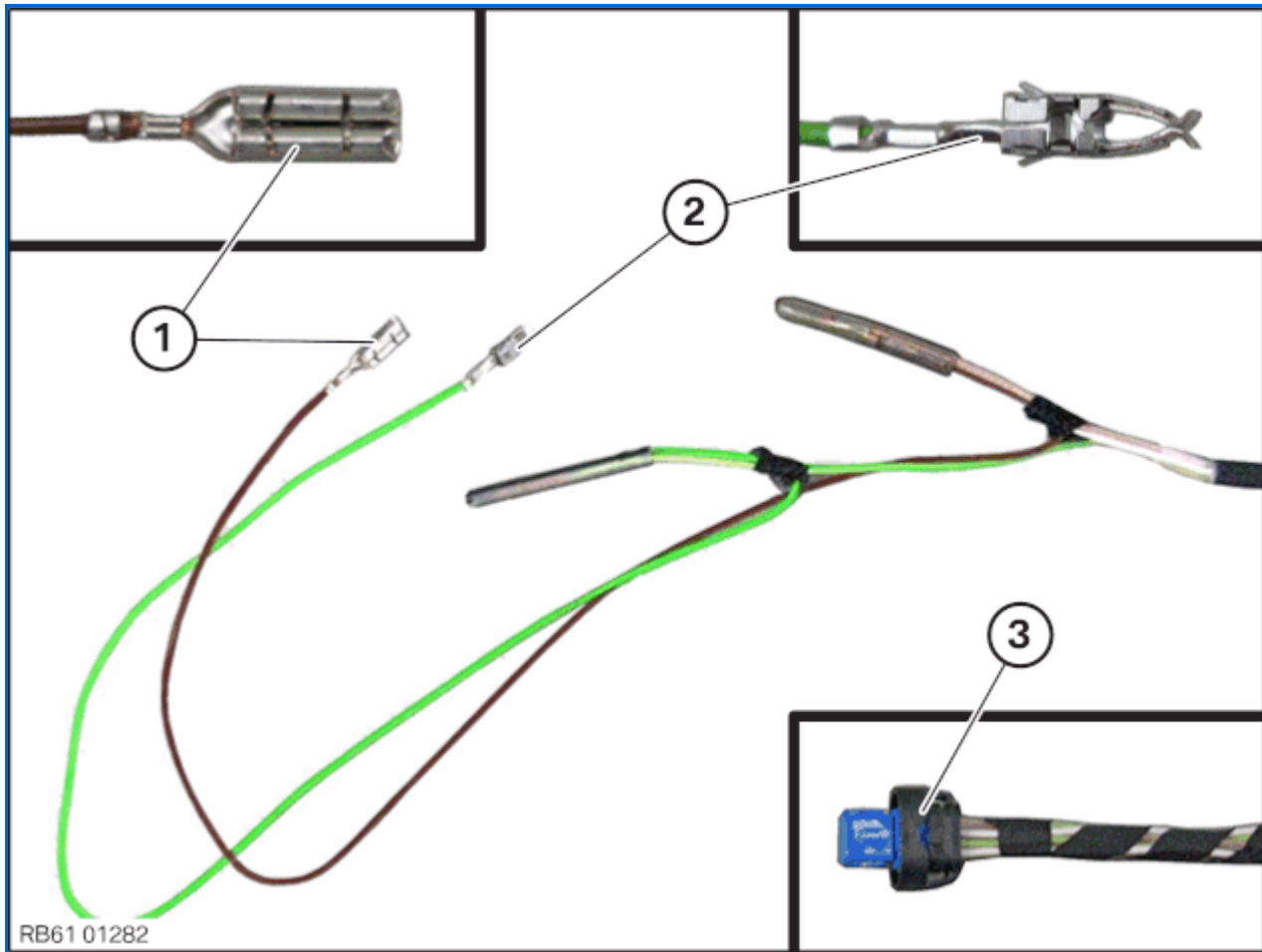
One part is routed to the power distribution box in the luggage compartment on the right, the other part is routed towards the front to the headunit.

After successful completion of function check, detach start and end of faulty cable at first mounting point.



Note:

Work is shown by way of example. There may be differences in specific details depending on the vehicle equipment.



Connect connector (3) with the rear view camera.

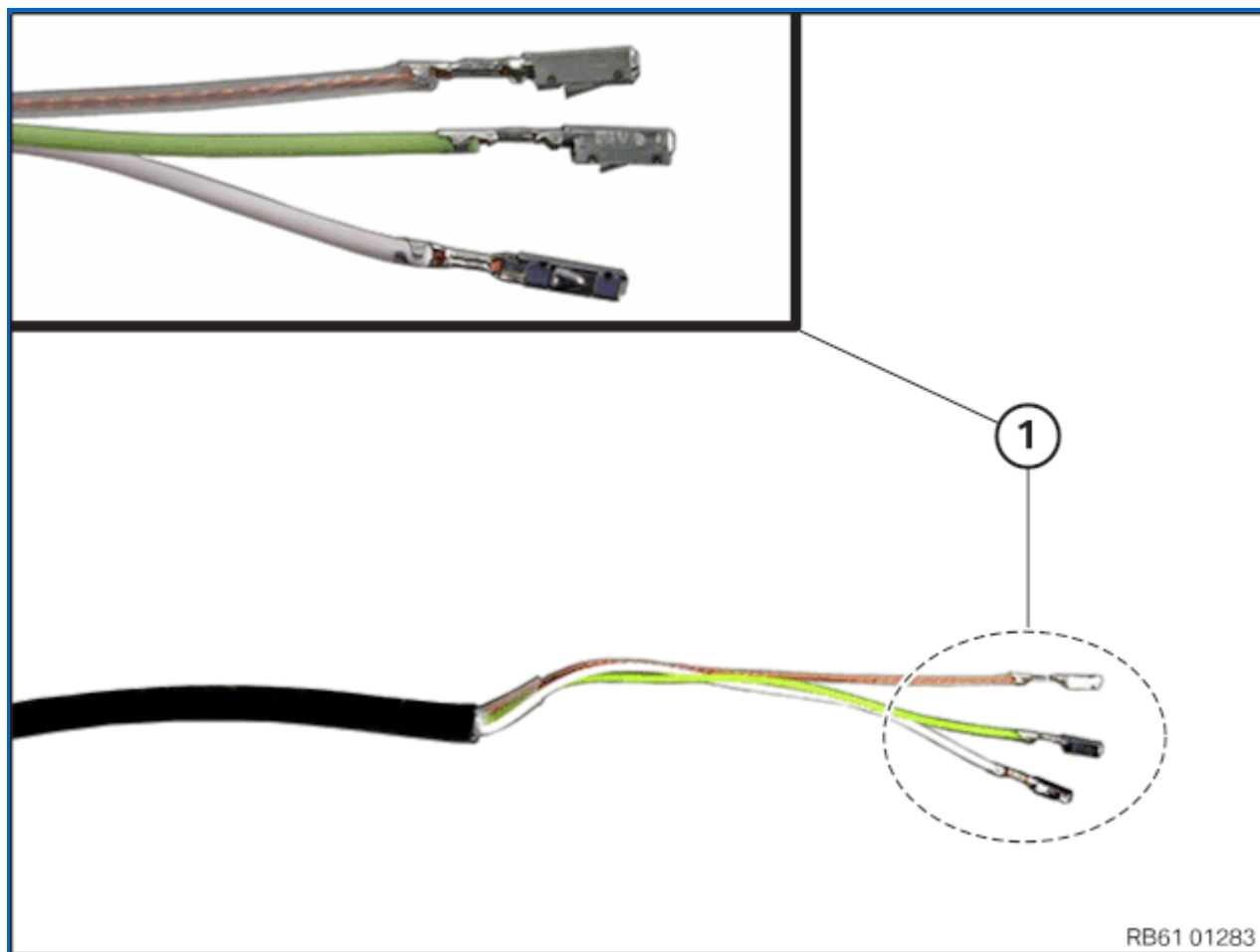
Route connecting line (1; 2) to the power distribution box in the luggage compartment on the right.

See [SSP-BTS-SP0000057122 - rear view camera](#) .

Connect cable (1) to ground node (Z10*16b).

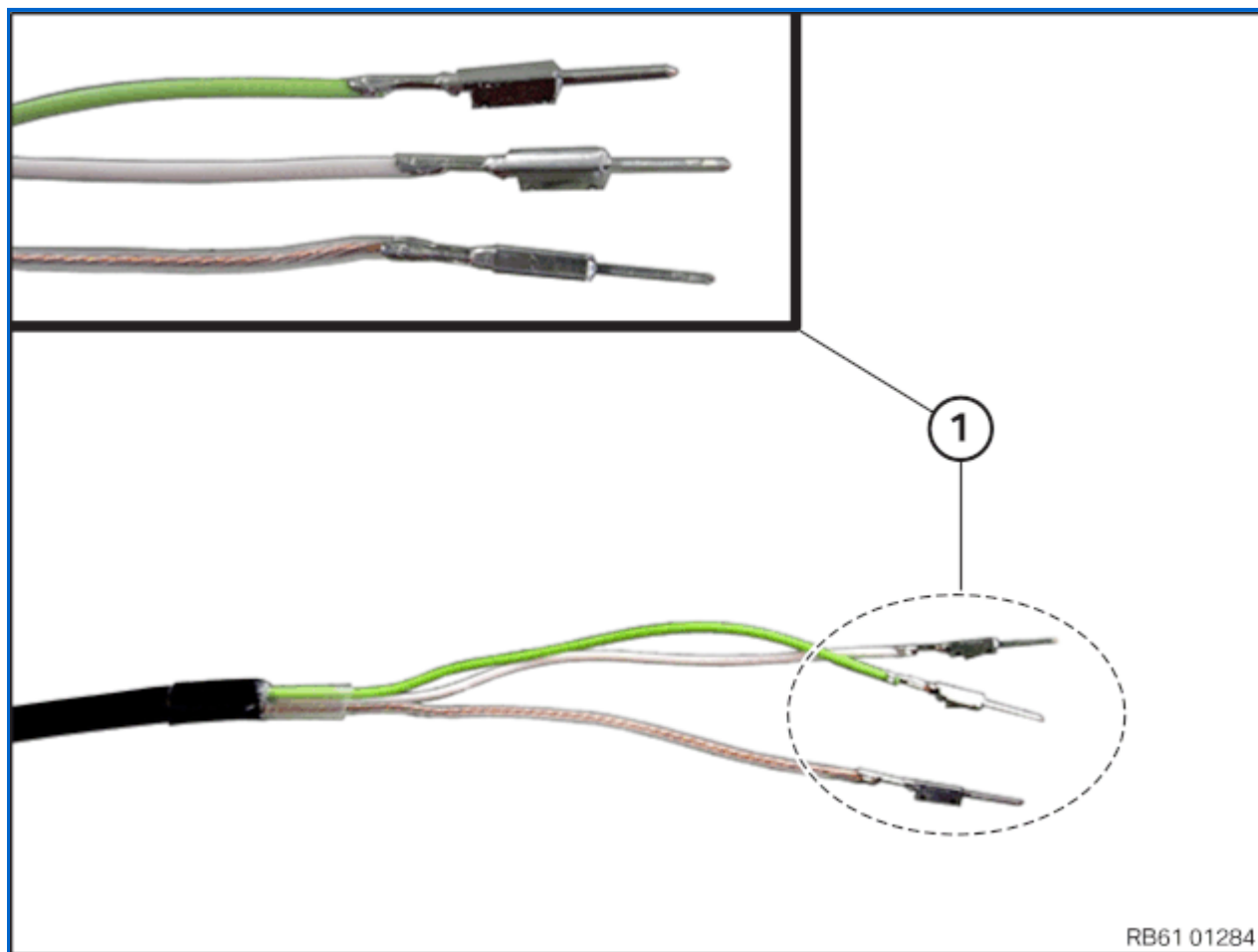
Pin cable (2) on power distribution box in the luggage compartment.

See [SSP-BTS-SP0000056656 - fuse F54](#).



Route repair cable to the headunit and repin cable (1).

See [SSP-BTS-SP0000057122 - rear view camera](#).



Route part B to the headunit and repin cable (1).

See [SSP-BTS-SP0000057122 - rear view camera](#).



Note:

After successful completion of function check,
detach start and end of faulty cable at first
mounting point.