



Hitch Receiver Installation Instructions

BMW X5 and X5M [F15/F85] 2014 – Current

(all engines/suspension pkgs/trimlines, including M Sport line and Aero kit)



Capacity: 7,700 lbs. Towed Weight / 600 lbs Tongue Weight*

* Vehicle rating per BMW Germany, using a zero-play hitch such as the invisihitch.

The capacity of the invisihitch exceeds these vehicle limits.

Tools Required

8mm socket
18mm socket
Drill with 3/16" bit

Plastic body-panel pry tool
Right-angle pick (snub nose)
Dremel with 1/8" inch rotary bit

Hardware Supplied

6 – plastic rivets (1/4" skirt retainer)
1 – M6 nut (for passive harness only)

Remove Rear Fascia:

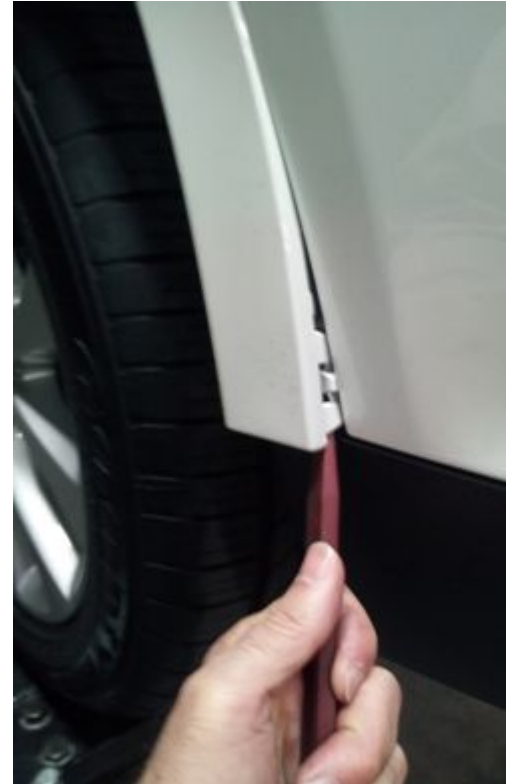
1. Inside each rear fenderwell, remove the 3 rearmost plastic rivets (3 per side).

Use a 3/16" drill bit and drill the center of each rivet completely through. Then pry the rivets out.



2. Starting at the bottom edge of the fenderwell, use plastic pry tool to carefully unclip fenderwell trim from rear fascia.

Pull the trim piece back to expose hidden screw (one per side). Remove screw using 8mm socket.



3. Underneath the vehicle, remove the 4 screws securing the center portion of fascia (2x on each side of center). Requires 8mm socket.



4. Continuing on the underside, remove the screws located near the outer corners of the fascia (1 per side). Requires 8mm socket.



5. While under the vehicle, locate the backside of the reflectors, squeeze the center clip and push. This will partially dislodge the reflectors.



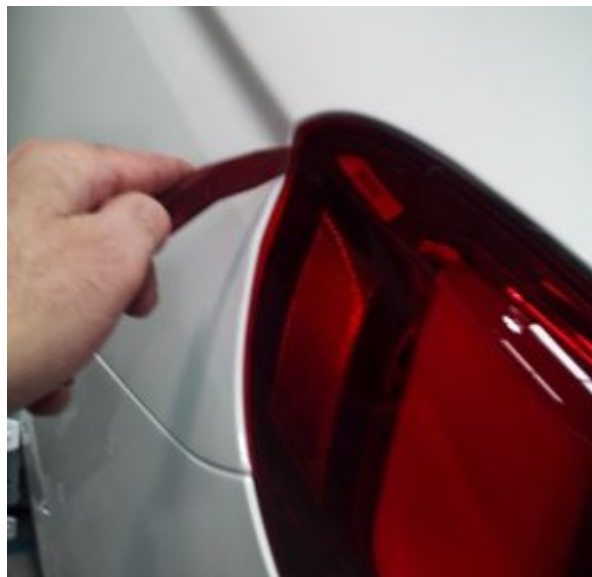
6. From behind the vehicle, pry out reflectors using plastic pry tool at the edge of reflector that is most toward the side of the vehicle. This will expose a hidden screw behind each reflector.

Remove hidden screws using 8mm socket.



7. Inside the cargo area, remove the Left and Right side panels to expose the back of the tail lights. Then remove the taillight assemblies.

To remove the taillight assemblies, remove the 8mm nuts (2 per side) securing the taillight assemblies to the body. Unplug the wiring from the taillight assemblies, and then pry the assemblies rearward using plastic pry tool at the forwardmost edge of the taillight assemblies.



8. Remove hidden, downward screw exposed by taillight removal (1 per side). 8mm socket required.



9. Use plastic pry tool to unclip fascia, starting at each fenderwell and working toward the center.

See photos for locations of individual clips.

To release the clips, insert pry tool into the slotted hole in fascia and push down.



- ① From fenderwells to taillights
② Under taillights
③ Sides of cargo door opening



10. Release the final 4 clips, located along top edge of the fascia (under the cargo door).

To release these clips, hold the cargo door open at an angle. Then use a snub-nose right-angle pick to push down where indicated in the photo below, while at the same time pulling the fascia away from the vehicle.



11. Once the fascia is fully unclipped from the vehicle, hold it close to the vehicle while unplugging the rear park-distance controller (PDC).

The plug for the PDC is located on the passenger side behind the fascia as shown in the photo.

After unplugging the PDC, the fascia can be moved away from the vehicle. Place it on a suitable padded stand or a blanket to avoid damage to painted surfaces.



Remove Factory Metal Bumper and Install Hitch Beam:

12. Remove 18mm nuts (4 per side) securing metal bumper to vehicle chassis. ***Save factory nuts for hitch installation.***

To access the upper row of nuts, hold cargo door at an angle and unscrew the plastic nut covers (see photo).

Discard the factory bumper. The hitch beam will take its place.



13. Assemble the *invisihitch* latching mechanism onto the hitch beam per the assembly diagram.

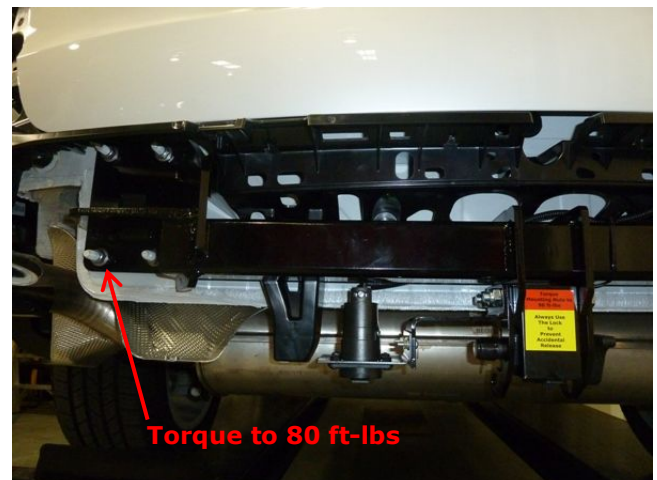
Install hitch beam onto the chassis studs. If installing a trailer-lights wiring harness, turn the nuts only a few turns for now, allowing the hitch beam to be pulled away from the chassis during routing of the harness.



14. If installing a wiring harness, perform all wiring steps now, per the wiring instructions, prior to tightening the hitch beam to the chassis.

15. Tighten hitch beam to chassis. ***Torque the 18mm nuts to 80 ft-lbs.***

If desired, the black plastic nut covers may be replaced onto the top studs but only after trimming $\frac{1}{8}$ inch off of the bottom of the plastic covers. This can be done by clamping each plastic cover in a vise and then using a hacksaw or similar tool to cut approximately $\frac{1}{8}$ inch off of the open end.



Re-install Fascia:

16. Bring the fascia close to the vehicle and reconnect the PDC plug that was disconnected in step 11.

Then re-install the fascia.

When re-installing the fascia, the four tabs along the top edge must all be fed into their anchoring slots (the "clips") simultaneously. Care must be taken to ensure that none of these four tabs rides over the top of its anchor slot instead of going down into the slot and clicking into place.

The rest of the fascia should clip into place easily. Work from the center, and move progressively toward the two fenderwells, pushing the clips into place with light pressure.



17. Replace the hidden screws under the taillights, behind the reflectors, and behind the fenderwell trim.

Clip the fenderwell trim back into place, and use the plastic rivets provided to re-secure it.

Replace the 6 screws underneath the vehicle, securing the bottom of the fascia.

Replace the taillights and the reflectors.

The installation is complete. Please see Operating Instructions to insert & remove the ballmount or the rack adapter.